

Leak detection instruments CoFox[®], conductivity based/AQ 220



Water alarm unit CoFox[®] ELT 8

The unit is used with a special floor probe for the detection of minute amounts of electrically conducting liquids such as water. The sensitivity is adjustable. The response level of the floor probe is approx. 2-3 mm. Water resulting from clogged drains, rain water, broken pipes, waste water pump failure, etc. causes the relay in the ELT 8 to respond and to operate external alarms via the voltage-free changeover contact. Several probes can be connected in parallel. *

Technical specifications

Supply voltage: AC 230 V

Power consumption: 4 VA

Adjustment range: 2.5–50 kOhm

Relay contacts

2 x voltage-free changeover contacts

Contact rating

AC 250 V, 2 A

Operating temperature range

Ambient: -10 °C/+60 °C

Housing: Wall mounting housing

Protection: IP 30 (EN 60529)

W x H x D: 53 x 113 x 108 mm



Alarm unit CoFox[®] ELT 500/4

Alarm unit for the detection of electrically conducting liquids such as waste water, acids, etc. (response threshold 50 kOhm). Principle of operation and application areas are similar to those of ELT 8, but this unit features four channels for separate probe circuits. Central alarm via voltage-free changeover contact is possible. Localisation of the leak by means of LEDs with fields that can be labelled on the instrument. Re-set function for alarm. This allows the detection of short term errors. It is recommended to connect the alarm reset unit AQ 220 to the central alarm. ELT 500/4 can be cascaded for large area monitoring. Please order the probes separately. *

Technical specifications

Supply voltage: AC 230 V

Power consumption: 3 VA

Switching threshold: 50 kOhm

Relay contact: 1 x voltage-free changeover contact

Operating temperature range

Ambient: -10 °C/+50 °C

Protection: IP 30 (EN 60529)



Alarm re-set unit AQ 220

This alarm re-set unit is designed for connection to leak detection systems and level switches (e.g. RG 210, ELT 8, etc.). Visual and audible alarms indicate errors. The audible alarms can be muted with the re-set button. The visual signal remains on until the problem is remedied or the probe is no longer in contact with the medium (e.g. in case of leak alarm) or the probe is submerged again (e.g. in case of dry-run protection). As soon as the visual alarm is switched off, the system resumes „ready“ mode. In addition, external alarms can be connected. (If external alarm units are not connected via the AQ 220, there is a risk that they will unintentionally remain switched off.)

Technical specifications

Supply voltage: AC 230 V

Relay contacts

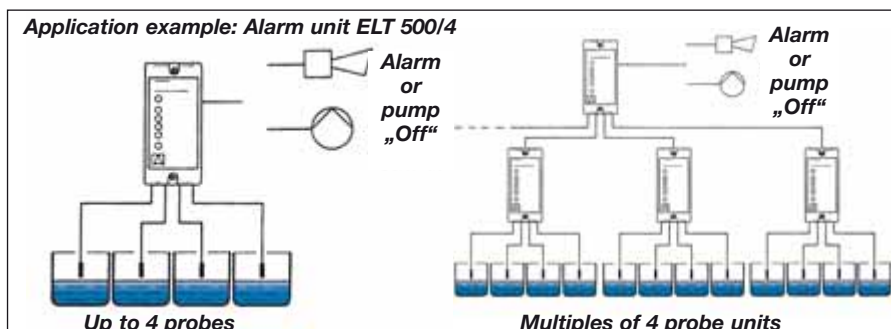
2 voltage-free, normally open contacts (horn, lamp)

Operating temperature range:

Ambient: -5 °C/+50 °C

Protection: IP 30 (EN 60529)

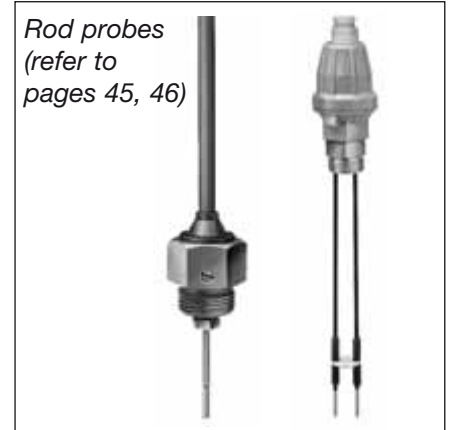
Refer to page 95 for application examples.



| DG: E, PU 1 | Part no. | Price € |
|---|----------|---------|
| Water alarm unit CoFox [®] ELT 8 | 53503 | |
| Alarm unit CoFox [®] ELT 500/4 | 53505 | |
| Alarm reset unit AQ 220 | 53230 | |

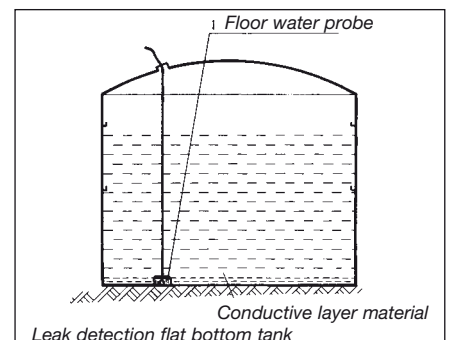
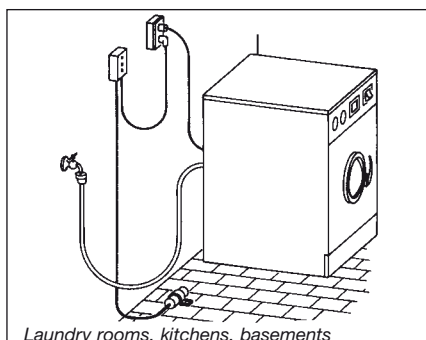
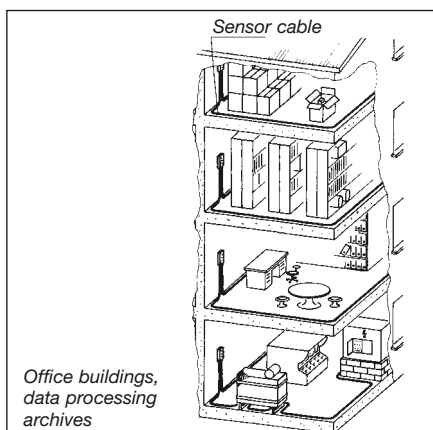
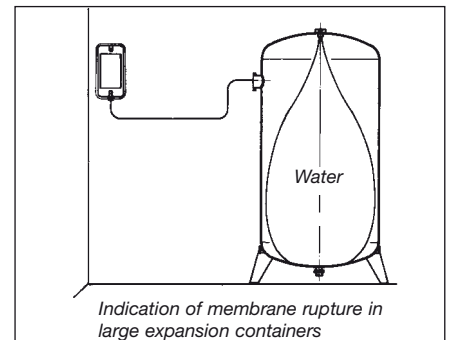
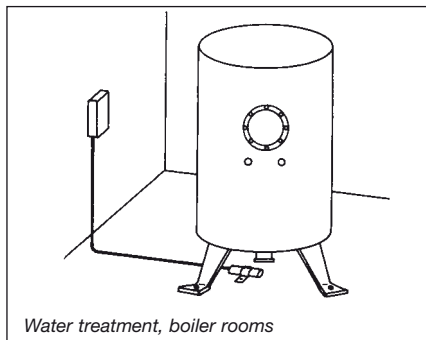
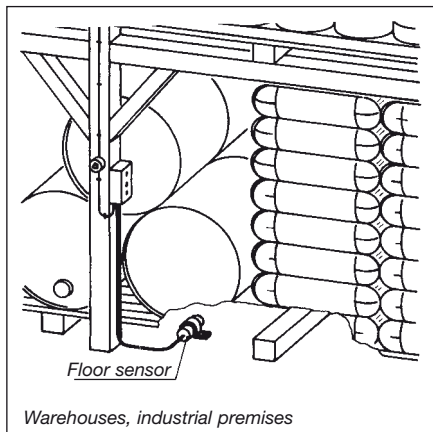
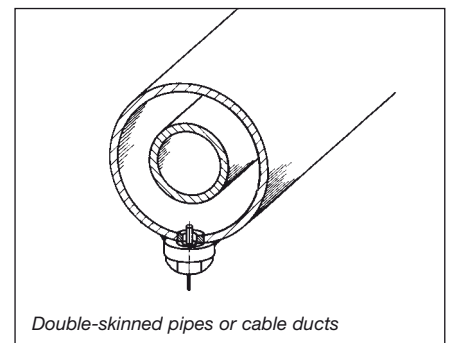
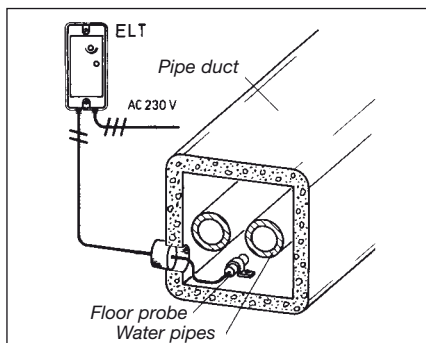
* Standard probes and special probes are available, please refer to page 95 and pages 45, 46. The selection depends on the operating conditions

Probes for conductivity based leak detection instruments, application examples



Floor water probe BWS 11
Suitable for ELT 8, ELT 680 and ELT 500/4. Probe diameter 75 mm, cable length 150 cm, response level approx. 2–3 mm.

Wall mounting rail probe WSS
Height adjustable probe with wall mounting rail. Cable length 150 cm. Adjustment range approx. 200 mm.



Many other probe versions are available. Please enquire.

| DG: E, PU 1 | Part no. | Price € |
|---------------------------------|--------------|---------|
| Floor water probe BWS 11 | 55111 | |
| Wall mounting probe WSS | 55050 | |